

2024 – 2025 BGSL Hunter Orientation Dates

- Saturday, May 4th @ 9:00 AM
- Saturday, Aug 3rd @ 9:00 AM
- Thursday, August 15th @ 7:00 PM
- Saturday, August 24th @ 9:00 AM
- Saturday, October 5th @ 10:00 AM
- Thursday, October 24th @ 7:00 PM



Legal game to hunt on BGSL property

- Small Game - Rabbit, Squirrel, Dove, Crow, Coyote and Waterfowl
- Turkey
- Deer



All Kentucky Fish and Wildlife rules and regulation including BGSL rules and regulations must be followed.

Who can hunt at the BGSL ?

- Any member in good standing that meets the necessary rules and guidelines
- Everyone must appropriately qualify
 - n/a for small game
- Participants must attend and complete a BGSL hunter orientation course.
 - Participants that hunted the previous year may choose to receive an electronic copy with any updates or changes highlighted and sign and drop off the hunting waver before going afield.
 - Participants that did not hunt the previous year must attend the hunter orientation in person and sign the hunting waver before going afield.
- Everyone must provide proof of successful completion of a state-recognized hunter education course based on KDFWR requirements. (i.e. KY “orange card”)
 - Must meet state minimums for hunting (state hunting license)
- Must pay the appropriate fees BGSL Annual Hunting Permit plus any additional fees related to specific game (Deer, Turkey, etc.) This is NOT a “no kill - no pay” hunting property.
- Must sign the BGSL Hunting Waiver / Information Sheet

BGSL Hunting Fees

Small Game

- \$100 (BGSL hunting permit)

Turkey

- Spring Turkey Permit Lottery requires a Hunting Permit off \$100 if drawn.
- Fall Turkey Permit only \$160 for 2 birds. (included with Either Sex Deer Permit)

Deer

- Antlerless Deer: \$200 (2 Antlerless deer)
- Either Sex Deer: \$500 (2 antlerless and 1 legal antlered deer or 3 antlerless - also includes a fall turkey permit)
 - BGSL EITHER SEX DEER hunters, in exchange for an increased fee structure, will have exclusive hunting privileges from Sat NOV. 9th, 2024 – Tuesday NOV. 12th, 2024 • Either sex deer hunters who have already harvested their buck will be restricted from hunting modern gun until Wednesday Nov 13th..

Youth Fees:(outside the free youth weekends is ½ of adult fees)

- Antlerless Deer: \$50 BGSL Hunting permit + \$50 Antlerless Deer = \$100
- Either Sex Deer: \$50 BGSL Hunting permit + \$200 Either Sex Deer = \$250

Fee's listed include the BGSL Hunting Permit

Small Game at BGSL



BGSL Closed Dates 2024

SMALL GAME / TURKEY / WATERFOWL

CLOSED DATES:

Oct. 12th - Oct 13th

(Youth only deer)

Oct. 19th - Oct 20th

(Muzzleloader deer)

Nov. 9th, - Nov. 24th

(Modern gun deer)

Coyote's are fair game at all time following the KDFWR
guidelines!!

Legal Archery Hunting Equipment

- Any archery equipment meeting state minimum guidelines

Legal Firearms Hunting Equipment

Small Game:

- Shotguns - #6 shot or smaller, Dove is #7.5 or smaller, Airguns of “adequate power” , NO rimfire /rifles “PERIOD”
 - Exceptions for Coyote
 - Muzzleloaders - Primitive or Inline
 - Shotguns - (following state guidelines)
 - Handguns - “ straight-walled” calibers not to exceed .44 mag
 - Long Guns- “ straight-walled” pistol calibers not to exceed .44 mag, and 350 Legend, .444 Marlin, .450 Bushmaster, and .45-70 Government

Turkey:

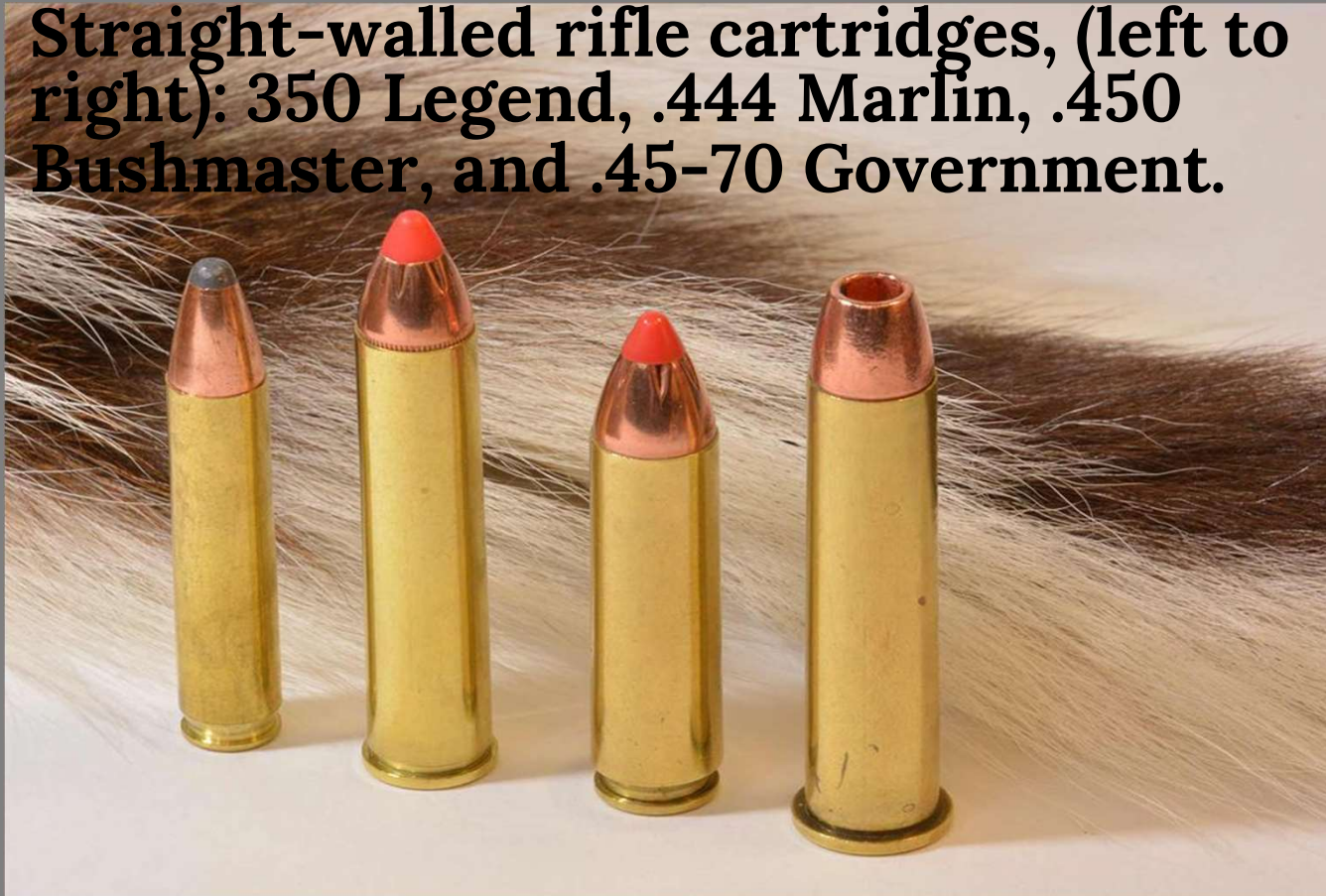
- Archery, crossbow, gun opportunities. Remember to check the dates for legal hunting equipment.

Deer Hunting:

- Muzzleloaders - Primitive or Inline
- Shotguns - Shotguns with slugs smooth bore or rifled slugs
- Handguns - “ straight-walled” calibers not to exceed .44 mag
- Long Guns- “ straight-walled” pistol calibers not to exceed .44 mag, and 350 Legend, .444 Marlin, .450 Bushmaster, and .45-70 Government.

Straight-walled Rifle Cartridges

Straight-walled rifle cartridges, (left to right): 350 Legend, .444 Marlin, .450 Bushmaster, and .45-70 Government.



BGSL Turkey Hunting

Spring Turkey is a lottery system to hunt. (\$10 a chance or 10 chances for \$80)

If drawn to hunt you will be required to purchase a BGSL Hunting Permit for \$100.

Spring Turkey season “April 13th - May 5th 2024”

Fall Turkey does not utilize a lottery system, fall Turkey permit is \$60 for 2 birds.

Legal hunting equipment:

- Archery, crossbow, and gun opportunities. Remember to check the dates for legal hunting equipment.

BGSL Dove Hunting Field

All Dove hunting guidelines to follow KDFWR and BGSL regulations/guidelines.

Numbered shooting stations available- (hay bales- will be placed accordingly)

- 1-2 adults per station or 1 adult and two youth
- Hunters must sign in and out in the lobby at the main clubhouse.
- Eye and Hearing protection required, “this is a dove shoot you will likely be peppered with falling shot”
- Shot size should be 7.5 or smaller
- Trained Bird retriever dogs leashed are allowed
- **Only shoot high birds, Do not shoot low birds** or towards the main clubhouse. (shot angles should **NOT** be less than 45 degrees)
- Guns must be unloaded walking to and from the Dove field
- Pick up your empty hulls

BGSL Dove Shooting Times

Dove Season shooting times: “NO Dove hunting away from the Dove Field”

1st Season - Sept 1st through Oct 26th.

Sept 1st 11:00 AM – 1:00 PM and again at 4:30 PM – 7:30 PM

The Dove Fields are Closed to hunting Monday-Thursday thru September!

Beginning Sept 6th through Sept 29th Fridays – Saturday – Sunday

Mornings Sunrise – 9:00 AM / Afternoons 4:30 PM – 1 hour before sunset.

Beginning Thursday Oct 4th: Sunrise – ½ hour before to sunset!

2nd Season - Nov 28th- Dec 8th -- Sunrise – ½ hour before to sunset!

3rd Season - Dec 21st -Jan 12th -- Sunrise – ½ hour before to sunset!

As everyone knows Sunrise & Sunset changes daily, be sure to check the times, it's your responsibility to know the correct shooting time!!

BGSL Coyote Hunting

Hunters must attend a hunter orientation and pay the necessary BGSL hunting permit fee along with .

All coyote hunting to follow KDFWR and BGSL regulations/guidelines.

Max of 2 hunters per zone, you must check in and out.

Legal weapons for Coyote hunting: BGSL legal deer hunting weapons

- Muzzleloader
- Shotguns (following state guidelines)
- Straight-wall rifle calibers (350 Legend, 450 Bushmaster, 444 Marlin, 45-70)
- Straight-wall pistol calibers not to exceed 44 Mag (357M, 44M, etc)



You can hunt coyotes year-round, day or night (exceptions do apply) check your KDFWR guidelines.

BGSL Deer Hunting

All hunters must attend a hunter orientation and pay the necessary BGSL hunting permit fee and the associated deer hunting fees .



Firearm Qualifications:

You must use a club-legal firearm for deer

- Scoped Firearms - 2 bullets within a 7" circle at 100 yards.
- Open Sight firearms - 2 bullets within a 7" circle at 50 yards.
- Hunter target **MUST** be witnessed by a staff member and the target signed/dated.
 - TURN IN YOUR TARGET TO THE OFFICE
- May attempt to qualify anytime the GP Range is open.

You may not attempt to qualify more than 2x's/day for a season maximum of four (4) days.

Archery Qualification:

- Modern Equipment 2 arrows in the kill zone of a 3D deer target at unknown distances up to 30 yds.
- Traditional Equipment 2 arrows in the kill zone of a 3D deer target at unknown distances up to 20 yds.
- The Operations Manager or Wildlife Comm Member (or their designate) may qualify you.

Tree stands & Hunting Blinds

Permanent tree stands are not allowed. Tree stands that damage trees are not permitted. (i.e. screw-in types, etc.) ALL stands, blinds must be labeled with the owner/hunter's name and phone number. They may be erected August 1st and they must be removed by March 1st. Stands improperly labeled/marked or found in the woods outside the specified times/locations are subject to immediate confiscation and the owner (if known) may be assessed a fine. Additionally, they may have their hunting privileges revoked. Pop-up style blinds are subject to the same labeling and date restrictions as are tree stands and must be marked in accordance with Kentucky regulations.

Driving off Roadways

Hunters may drive off the road only to erect or retrieve a stand/blind or to retrieve a harvested deer. In all cases, requests should be made to BGSF staff prior to leaving the roadways. Please be mindful of the time and location of other hunters when you do leave the maintained roads to help preserve the hunt quality for others. Mobility impaired hunters may see BGSF staff for special dispensation.



***** Hunting fees must be paid before setting stands or placing Blinds! *****

Tree Stand/Ground Blind Placement

“Hunter Ethics should apply”

- You should not place stands or blinds near others. Try and keep your stand or blind approximately 100 yards from others.
- Try and place or move stands as early as possible prior to significant opening dates. If at all possible move stands or check trail cameras near the middle of the day.
- Try and have multiple spots in case someone else pins in prior to your arrival.
- Try and avoid walking by others to get to your stand location, have multiple routes to your stand if possible.
- Please be respectful of your fellow hunters, treat them as you would expect them to treat you.

Restricted Areas

Due to the nature of League activities, certain areas may be closed to hunting for safety and or event conflicts, etc. Closings may vary and often come with short notice. Please keep yourself informed by faithfully checking the information board located by the hunter logbook in the foyer. Some of the general locations that will be closed to hunting are:

- All ranges and the area(s) immediately around such ranges. Please observe 100yd. buffer around these areas. Primitive campsites may also be included in this category.
- Hunting from buildings (including barns) is prohibited.
- The Gun Dog training fields are off-limits & hunting is restricted.
- The entire area inside the paved loop of the main road.
- The pasture/hay fields around the main clubhouse.
- RV Camping Areas.

This is NOT a full list of restricted areas. Please be attentive in orientation class and observe all temporary closures posted and/or communicated.

Hunting Zones



Checking-in & Checking-out

- REQUIRED EACH HUNT
- “First –come” “First-serve”
- 5 zones -
 - 5 deer hunters per zone max
 - 2 Coyote hunter per zone max
- “priority hunt list”
- When accessing BGSJ property to hunt via Car, Truck, Air Plane, Helicopter, ATV, Motorcycle, or Boat you must sign in and out at the main club house!!



Check In & Out

- First come - First serve!
- You must sign in and include time and location
- You must sign out after each hunt. (do not leave the property without signing out)
- Do not sign in more than 1 hour before going to your location.

BGSL HUNTING LOG 2020 - 2021

Name: Todd Parker Date: 9/4/20
AM Time In/Out 1 PM Time In/Out 4:30 / 6:00
Zone: 4 Vehicle Description: White Jeep
Harvest Info: _____ Confirmation # _____

Name: James Lidge Date: 9/5/20
AM Time In/Out 4:30 / 9:15 PM Time In/Out 1
Zone: 4 Vehicle Description: GMC Terrain
Harvest Info: _____ Confirmation # _____

Name: Eric Reynolds Date: 9/5/20
AM Time In/Out 5:00 / 9:52 PM Time In/Out 12:30 / 8:34
Zone: 1A Vehicle Description: Silver Chevy
Harvest Info: DoE Confirmation # 2096661520057

Name: Byrce Tade Date: 9/5/20
AM Time In/Out 05:17 / 09:00 PM Time In/Out 1
Zone: 2 Vehicle Description: White F150
Harvest Info: _____ Confirmation # _____

Pin In & Out

- “Again” First come - First serve!
- Place pin on the board as close as possible to your stand location(not where you park)
- You must remove your pin from the board after each hunt. (do not leave the property without pinning out)
- Do not pin in more than 1 hour before going to your location.

Dove field map will be different!!!!

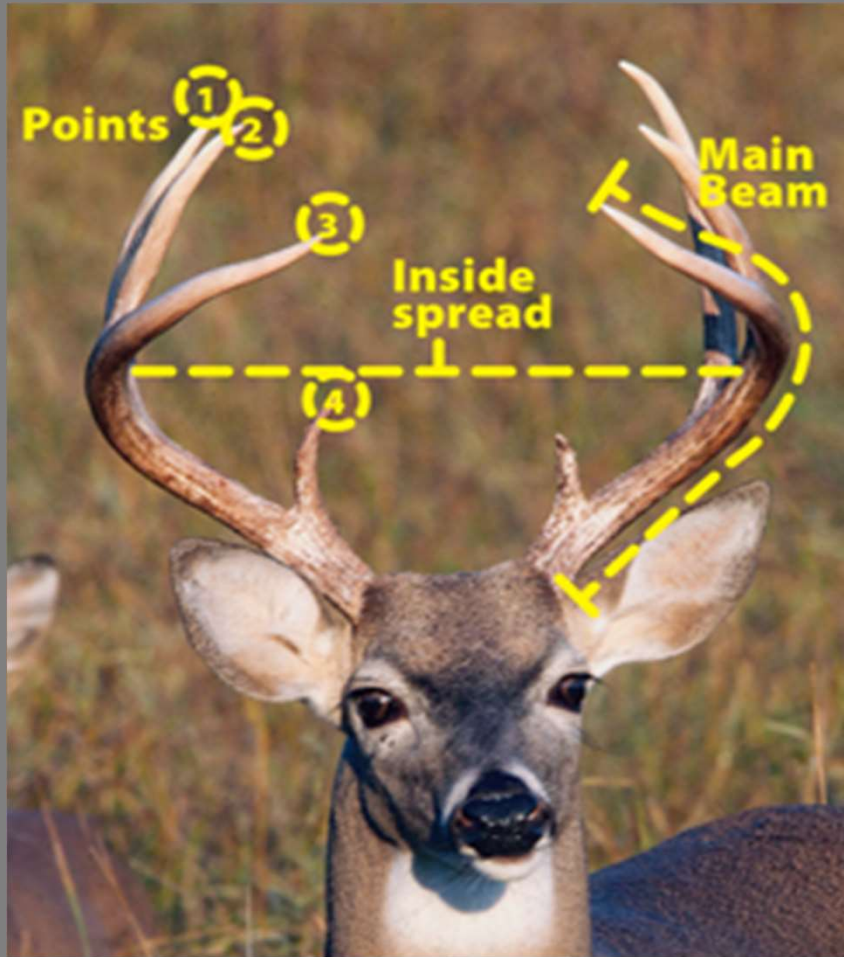


Harvest Quotas

- Antlerless Deer: The maximum harvest quota is set at 30 antlerless deer. In the event that this harvest number is achieved, antlerless hunting will cease until a herd assessment can be done to determine if additional animals should be taken.
- Antlered deer: Qualified either sex deer hunters have the option of harvesting an antlered deer on the property. The League has a minimum standard that applies when harvesting antlered animals. Legal antlered deer must have a minimum antler spread of 15". Please be certain that your deer meets this standard before you shoot! Failure to observe this standard may result in disciplinary action from the BGSJ Board of Directors. Shooting a marginal buck is not worth your membership!
- Youth - First free youth hunt has no antler restrictions. All other youth hunters/hunts must follow above guidelines.



BGSL antler restrictions – 15” minimum



- Observe 15” minimum spread - Our goal is to harvest mature deer! The free youth weekends has no antler restrictions!
- Field mark – “ears between antlers”
“When in doubt DON’T SHOOT”
- Failure to comply may:
 - Result in disciplinary action
 - Cause forfeiture of deer
 - Result in loss of membership
 - See page 6 on BGSL Hunting Guidelines

No Guarantees - No Refunds

This is NOT a “no kill – no pay” hunt situation. Meeting all qualification standards does not guarantee you a filled tag at season’s end. All hunts are 100% fair chase with 100% wild Small Game, White-tailed Deer, and Wild Turkey. Hunts may be restricted as events evolve (i.e. harvest quotas met, disease in herd, etc.)

There will be NO REFUNDS.

Harvest Procedure

- Congratulations !
- Be in accordance with all state regs / rules.
- Once you have harvested you animal:
 - *It's your responsibility to recover your harvest, be prepared - have a plan!
 - All animals **MUST** be seen by BGSL staff **OR** a wildlife comm member/designate
 - Animals **MUST** be properly recorded, you must complete your tele-check and record the confirmation number in the log book prior to leaving the property.
 - Weight, antler spread, etc.



* Policy for leaving roadways - You are allowed to leave the roadways to Hang or Retrieve Stands or deer. The use of ATV's or SxS's to recover game are acceptable! It's not the responsibility of BGSL or the wildlife committee to track or recover your game.

- **USE COMMON SENSE !**

- Events / roadways / etc.

- **GATE ACCESS:**

- You may request a 24 hr gate card for after hours access
 - Refundable deposit

- **YOUTH WEEKEND :**

- Qualify? “Yes” Pay fees? “No” Orientation? Only the mentor is required to have completed.

- **Be respectful and courteous at all times!**

- In order to keep BGSL grounds clean, keep fluorescent tape and other trail markings to a minimum, and remove after the season is over. (Retroreflective tacks are a discreet alternative and may be left out year-round.)

- Remove any scent paraphernalia after use.

- Remove any trash you find, even if you didn't leave it.

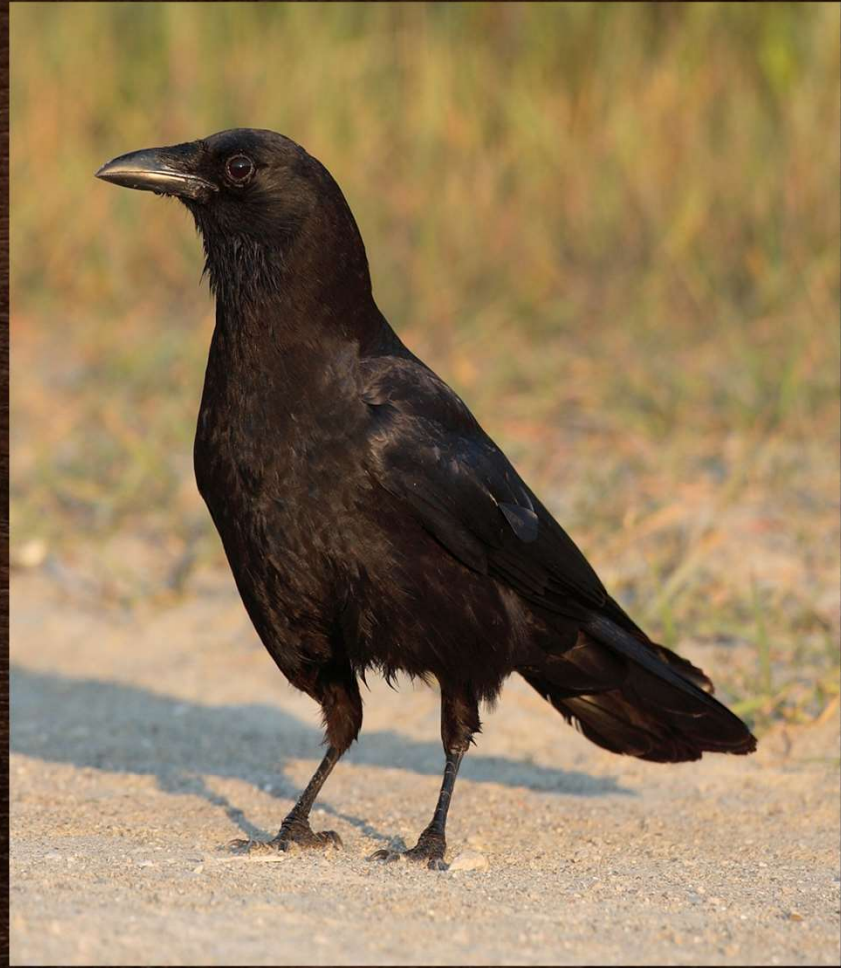
Misc Items



Questions ?







Small Game at BGSL

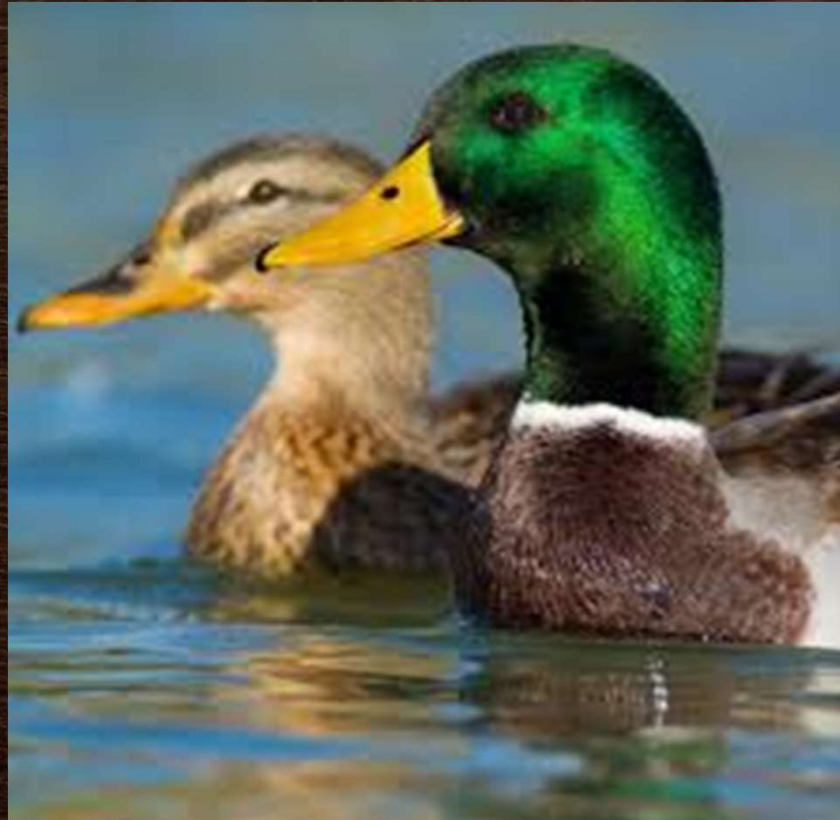


- Coyote
- Dog or Coyote ?

NEW

Waterfowl

NEW



Who can deer hunt at the BGSL ?

- Must be a member in good standing
 - Fill out the appropriate paperwork
- Must appropriately qualify
- Must attend a BGSL hunter orientation class
 - (New this year: everyone must attend a scheduled class)
- Must provide/submit proof of successful completion of a state-recognized hunter education course (i.e. KY “orange card”)
 - REGARDLESS of age – BGSL required for ALL participants
- Must pay the appropriate fees
 - See later slide



Legal deer hunting equipment (firearm)

- State-legal shotgun or muzzleloader
- Traditional or In-line
- Shotgun slug gun or smoothbore
- Whatever you can qualify with !



Legal deer hunting equipment (firearm)

- Handguns
- “straight-walled” ammo in pistol calibers up to a .44 mag.
- Examples ?
 - .41 long & .357 cal.



Legal deer hunting equipment (firearm)

- “long guns”
- “straight-walled” ammo in pistol calibers up to a .44 mag.
- Examples ?
 - .41 long & .357 cal. & .44 mag
 - NO other centerfire rifles



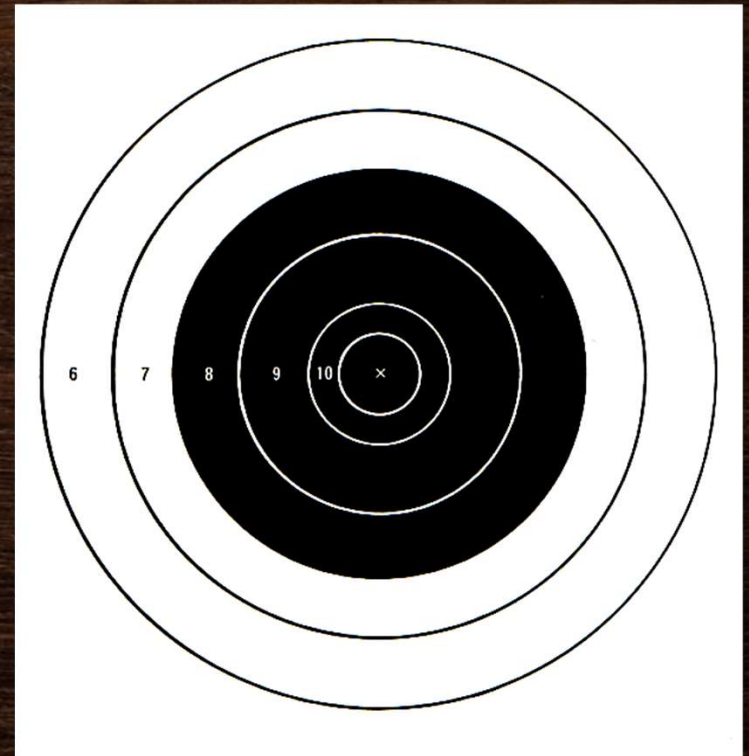
Archery Qualification Minimums (traditional)

- 2 of 3 arrows in an 7” circle at various distances up to 20 yds.
- You may not attempt to qualify more than 2x’s/day for a maximum of four (4) days.
- The Operations Manager or Wildlife Comm Member (or their designate) may qualify you.
- You will likely want to “schedule” this qualification.



Firearm Qualifications: Open-sight Guns

- 2 out of 3 bullets within a 7" circle at 50 yards.
 - Use a club-legal deer gun
 - May attempt to qualify 2x/day for a season maximum of 4 days.
- These can be off-hand, from a bench, on a sandbag, etc.
- Hunt target **MUST** be witnessed by a staff member and the target signed/dated.
 - **TURN IN TARGET TO OFFICE**
- May attempt to qualify anytime the GP Range is open.



BGSL Fees (either sex deer)

- \$50 (hunting permit) + \$250 (either sex deer) = \$300
- Allows the harvest of 1 antlered and 3 antlerless OR 4 antlerless deer.
 - Only 3 deer may be taken by firearms



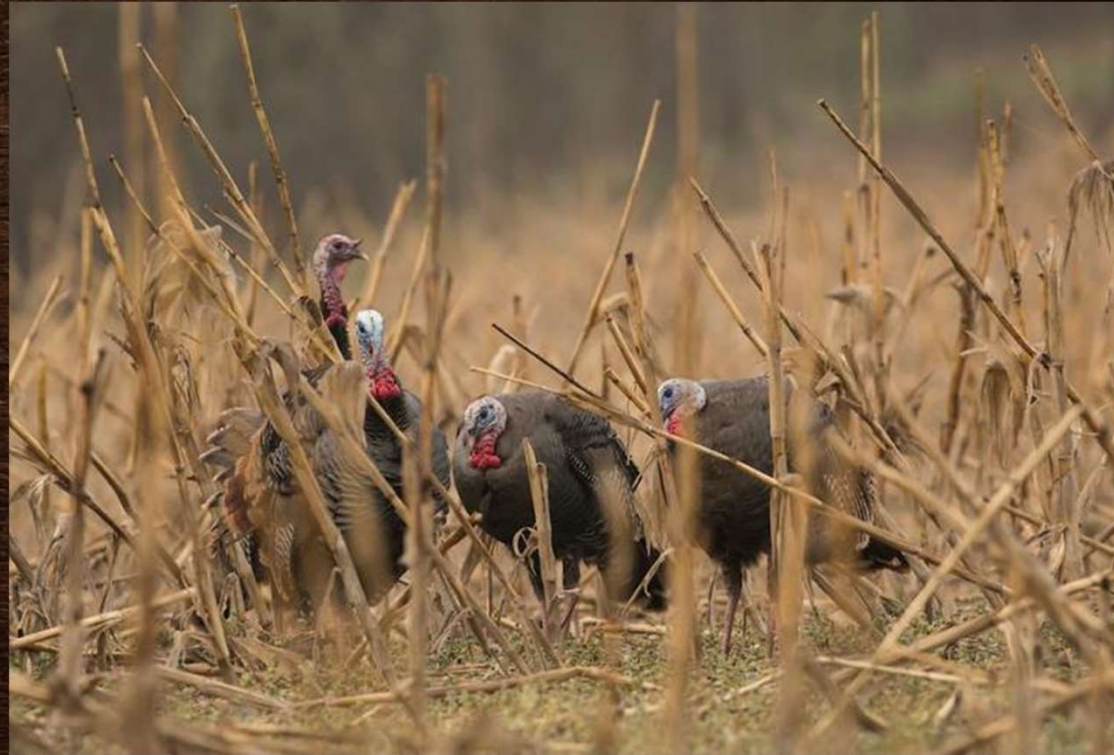
Cost

- Archery - all state legal archery equipment
- Shotguns - #6 shot or smaller (small game only)
- Airguns of “adequate power”
- NO rimfire /rifles “PERIOD”
- Dogs are allowed for small game
- Small Game Cost = \$50 Hunting Permit
 - WHO CAN HUNT SMALLGAME?
 - Approved members and “family” spouse & minor children including Grandchildren
 - YOUTH WEEKEND
 - Qualify? Pay fees? Orientation?
 - Do small game hunters need to sign in the logbook?
 - Yes, sign/pin in and out
 - Hunter Survey Forms
 - Required; suggested penalty



Fall Turkey Legal Equipment and Cost

- Archery, crossbow, gun opportunities. Remember to check the dates !
- BGSL Hunting Permit (\$50) + Fall Turkey fee (\$40 for 2 birds) = \$90.00 !
- Additional 2 birds for \$40.00
- State legal bird is legal at club.
- Club limit is 4 birds/hunter for the fall season. One must be bearded!
- Use the hunting book & indicate “turkey” hunting.



Deer hunting Legal equipment



- Archery - all archery equipment meeting state guidelines
- Muzzleloaders - Primitive or Inline
- Shotguns - Shotguns with slugs smooth bore or rifled slugs
- Handguns - “straight-walled” calibers not to exceed .44 mag
- Long guns - “straight-walled” pistol calibers not to exceed .44 mag. and Straight wall calibers 350 Legend



Small Game Hunting Cost at BGSL

- Small Game = \$50 Hunting Permit
 - **WHO CAN HUNT SMALLGAME?**
 - Approved members and “family” spouse & minor children also including grandchildren
 - **YOUTH WEEKEND**
 - Qualify? Pay fees? Orientation?
 - **DO SMALL GAME HUNTERS NEED TO SIGN THE LOGBOOK / HUNTBOOK ?**
 - YES
 - **HUNTER SURVEY FORMS**
 - Required; suggested penalty



BGSL Deer Hunting Fees

Antlerless Deer

- \$100 (hunting permit) + \$100 (antlerless) = \$200
- This enables a hunter to harvest up to 2 antlerless deer!
 - NOTE: only 3 of which may be taken with firearms

Either Sex Deer

- \$50 (hunting permit) + \$250 (either sex deer) = \$300

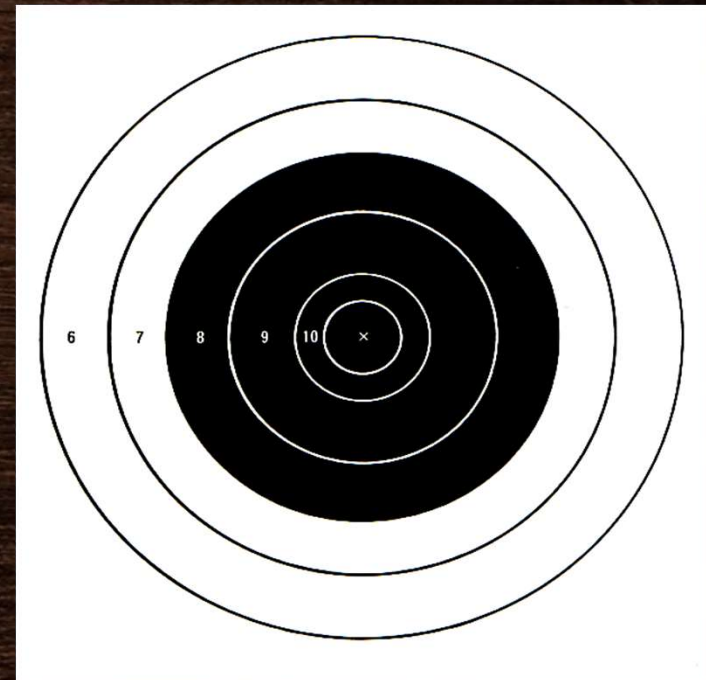
(BGSL EITHER SEX DEER hunters, in exchange for an increased fee structure, will have exclusive hunting privileges from NOV. 14, 2020 (Sat.) – NOV. 17, 2020 (Tues.)

- Allows the harvest of 1 antlered and 3 antlerless OR 4 antlerless deer.
 - Only 3 deer may be taken by firearms



Firearm Qualifications: Scoped/Open Sight Guns

- Scoped - 2 bullets within a 7" circle at 100 yards.
- Open Sights - 2 bullets within a 7" circle at 50 yards.
 - Use a club-legal deer gun
 - May attempt to qualify 2x/day for a season maximum of 4 days.
- These can be off-hand, from a bench, on a sandbag, etc.
- Hunt target **MUST** be witnessed by a staff member and the target signed/dated.
 - **TURN IN TARGET TO OFFICE**
- May attempt to qualify anytime the GP Range is open.



Archery Qualification Minimums (modern)

- Modern Equipment 2 arrows in the kill zone of a 3D deer target at various distances up to 30 yds.
- Traditional Equipment 2 arrows in the kill zone of a 3D deer target at various distances up to 20 yds.
- You may not attempt to qualify more than 2x's/day for a season maximum of four (4) days.
- The Operations Manager or Wildlife Comm Member (or their designate) may qualify you.

Archery Qualification

- Modern Equipment 2 arrows in the kill zone of a 3D deer target at various distances up to 30 yds.
- Traditional Equipment 2 arrows in the kill zone of a 3D deer target at various distances up to 20 yds.
- You may not attempt to qualify more than 2x's/day for a season maximum of four (4) days.
- The Operations Manager or Wildlife Comm Member (or their designate) may qualify you.



Legal Archery Hunting Equipment

- Any archery equipment meeting state minimum guidelines

